

ASSISTANCE How to Care for Victims

- Try to act quickly, but if you are not trained, do not move the victims. Improper first aid can cause or worsen injuries.
- Only attempt to remove a trapped person in the event of a fire; otherwise, do not try to move them.
- Do not remove the helmet of an injured motorcyclist.
- Do not give them anything to eat or drink.
- Talk to them and offer comfort.



**PREVENTION IS
THE FIRST EFFORT
THAT SAVES LIVES.**

**...follow the
recommendations in this
leaflet and share them.**

COLLABORATE CIVIL PROTECTION STARTS WITH YOU



USEFUL CONTACTS



PREVENT PLAN RESCUE

Municipal Civil Protection Service of Almada
Rua dos Lusíadas - Bairro do Matadouro
2800-221 Pragal
Tel.: 212 946 577
cm-almada.pt
proteccao.civil@cm-almada.pt



Road Traffic Accidents

Prevention | Self-Protection



CMA
CÂMARA
MUNICIPAL
DE ALMADA

PROTECT

- 🚒 At the accident scene, do not smoke or allow anyone to light a flame. There could be a risk of fire or explosion due to spilled fuel.
- 🚒 Turn off the engines of the damaged vehicles.
- 🚒 Secure the damaged vehicles by applying the handbrake. If possible, place chocks or stones under the wheels.
- 🚒 Cover spilled fuel or oil with dirt.
- 🚒 If a fire occurs, use an extinguisher or dirt to put it out.



SIGNAL

- 🚒 Wear a reflective vest.
- 🚒 Place the emergency triangle.
- 🚒 Make, or ask someone to make, signals to other drivers to reduce speed as they approach the accident scene.



**KNOW HOW
TO PROCEED
IF YOU WITNESS
OR ARE
A VICTIM OF A
ROAD ACCIDENT.**

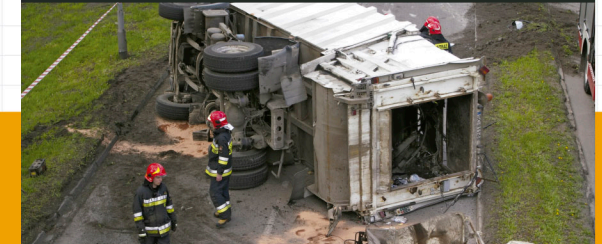
**YOUR BEHAVIOR
AFFECTS YOUR
SAFETY AND
THAT OF OTHERS.**

ALERT

- 🚒 Call 112 or use SOS emergency stations. Never assume someone else has already done this.
- 🚒 Park your vehicle safely before making the call.

Provide the following information:

- 🚒 The exact location of the accident, and the direction if on a road with a divider.
- 🚒 The number and approximate ages of the victims.
- 🚒 The apparent condition of the victims and whether anyone is trapped.
- 🚒 Any dangerous situations (fire, oil spill, blocked road, etc.).
- 🚒 The number of vehicles involved.



- 🚒 Specify the type of vehicles involved (e.g., light vehicles, heavy vehicles, motorcycles, hazardous materials transport).
- 🚒 In the case of an accident involving hazardous materials transport, do not approach the scene and try to prevent others from doing so. If possible, identify the name of the company and the numbers on the orange panel (if present).