

STUDENT ACCOMMODATION

CARAMUJO/ROMEIRA



AIRPORT
30 MIN.



PRAGAL STATION
10 MIN.



MST STATION (TRAM)
15 MIN.
[BY FOOT]



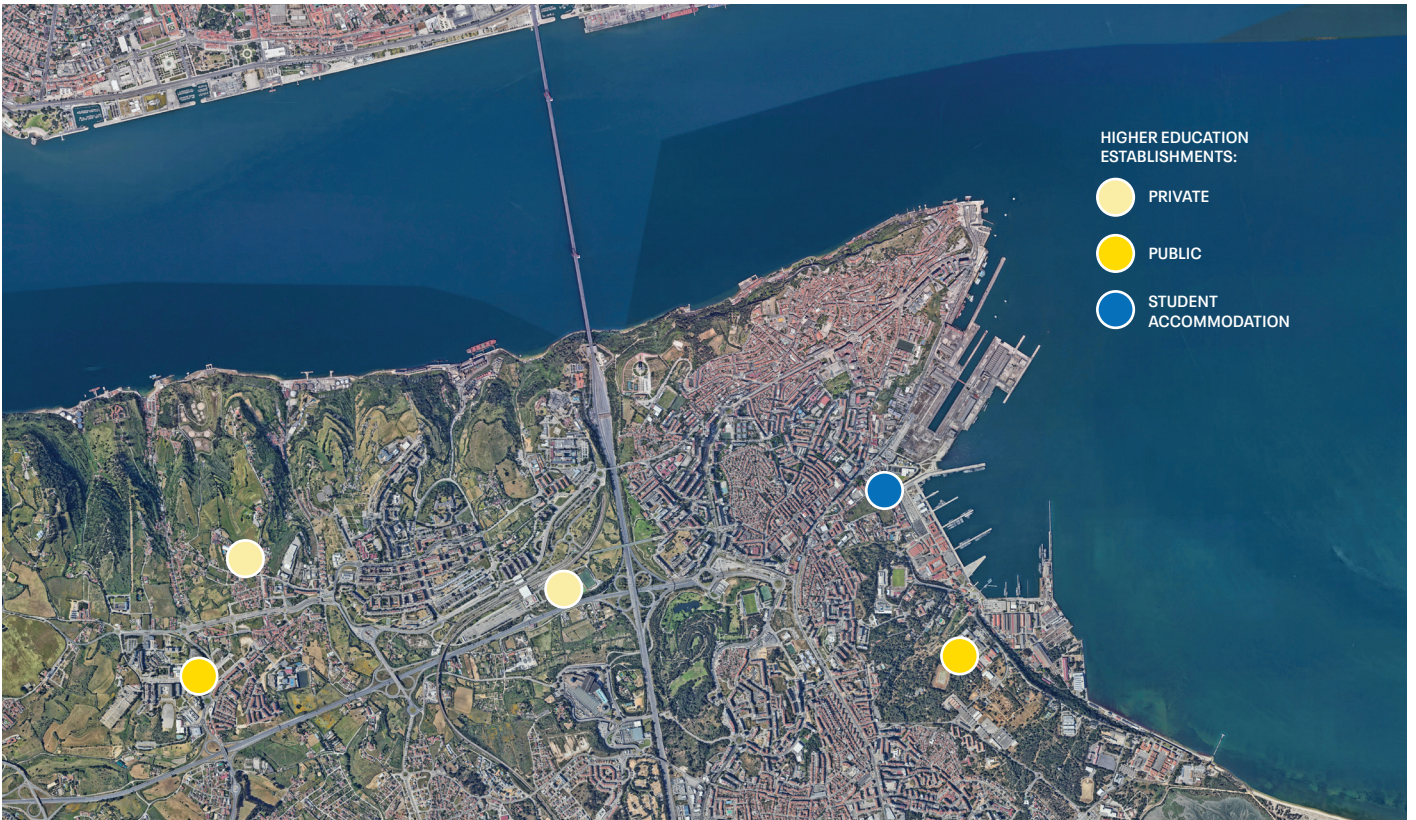
FLUVIAL TERMINAL
5 MIN.

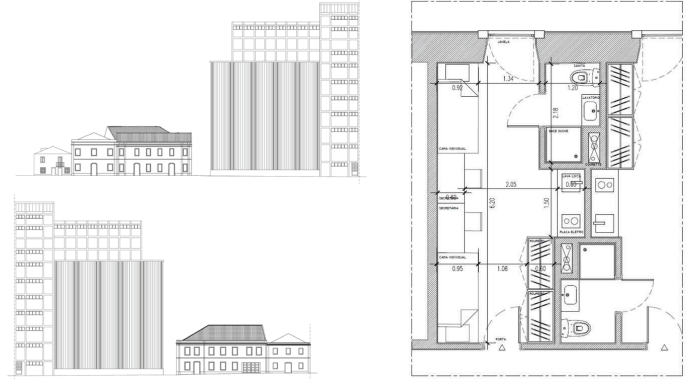


CARRIS METROPOLITANA
3 MIN.
[BY FOOT]



A2
5 MIN.





The municipality of Almada plays a strategic role in education within Greater Lisbon, both in the current context and in the medium and long term.

With easy access to various higher education establishments - particularly the Monte de Caparica Campus (NOVA FCT), with a total of around 11,500 students enrolled - an urban regeneration operation is being proposed to provide student accommodation, involving the refurbishment and extension of an existing building complex in the historic area of Caramujo Romeira.

This intervention is intended to have a strong impact on the urban regeneration of the area in

which it is located, preserving the memory and the identity of the place, in line with the municipality's efforts to rehabilitate its historical heritage.

This is a structuring investment that complements the still deficient supply of qualified student accommodation, with special relevance and economic and social potential.

In addition to accommodation for national and foreign students, the facility will also be able to house public or private higher education scholarship students and researchers, teachers and non-teaching staff from higher education institutions on national or international mobility.



Intervention area 1033 m²
 Total construction area 3099 m²

- 56 rooms, 112 beds
- Kitchen
- Dining area
- Study rooms/Library
- Living room
- Sanitary facilities
- Laundry service
- Management office
- First aid room
- Storage for residents (lockers/travelling bags)
- Maintenance workshop/storage room



cm-almada.pt
dmdu@cm-almada.pt